



Workplace Trends: Implementing Change

9:00am – 5:45pm, *followed by evening drinks reception*

Tuesday 8 November 2005

The British Museum, London WC1

Business is changing, the nature of our work is maturing, our workstyle is becoming more complex, and we demand more of our workplace. Designers and Corporate Real Estate advisors are faced with the challenge of providing effective workplaces that meet the raised expectations of the occupants whilst meeting their own efficiency targets.

This exciting and thought-provoking conference explores the factors that are essential to creating new workplaces that meet the project success criteria of both the business and real estate advisor.

Our range of speakers includes change management experts, workplace consultants, corporate real estate advisors and occupiers who will tell us how they implement change in the workplace, explaining the techniques and tools they use, their methods of motivating change and key lessons learnt.

Merlin Events & Marketing

Tel 01442 866378. Fax 01442 863464

Email mail@merlin-events.co.uk Internet www.workplacetrends.co.uk

Programme

Conference welcome

Julian Seward, Principal, Swanke Hayden Connell Architects

What is driving workplace change?

Peter Thomson, Director, Future Work Forum, Henley Management College

The expectations that employees have of work have evolved rapidly, with more emphasis on work/life balance. Despite management inertia, organisations have to adapt their work practices to meet these expectations and ensure that the workplace evolves to match them.

Enabling change through facilities management

Ian Fielder, Chief Executive, BIFM

Ian looks at the ever-changing face of facilities management and considers how this is allowing FM Professionals to manage change in the workplace.

Implementing a new culture, workstyle and lifestyle at PwC

Paul Harrington, Real Estate Director, PricewaterhouseCoopers

Changing business needs have led to the development of innovative workstyles at PwC. Paul explains how PwC managed that change, how effective it has been and what lessons were learnt.

How to implement workstyle change: Tools and tricks

Alexi Marmot, Director, Alexi Marmot Associates

A rapid canter through the best way to make change happen, drawn from working directly with over 35,000 people in different organisations, observing how companies successfully reinvent their work environments.

Welcome back

Paul Finch, Editorial Director, EMAP Construct

Disruptive technologies and inflexion points

Philip Ross, Managing Director, Cordless Group

Philip will present case studies illustrating the rapid adoption of IP as a converged technology for buildings and will predict the timescales for adoption of the technologies that are set to transform work and the workplace.

Occupant feedback for successful change

Nigel Oseland, Director of Consulting, Swanke Hayden Connell Architects

This presentation will explore how occupant feedback is used to influence office design, initiate change management and provide valuable information on which workplace trends are beneficial, compared to those which hinder productivity.

Implementing sustainable solutions

Simon Roberts, Global Sustainability Skills Leader, Arup

Using the Integrated Workplace Performance framework, the presentation will describe a route to getting the best out of both buildings and their occupants in terms of sustainability and performance. This will be illustrated by case studies.

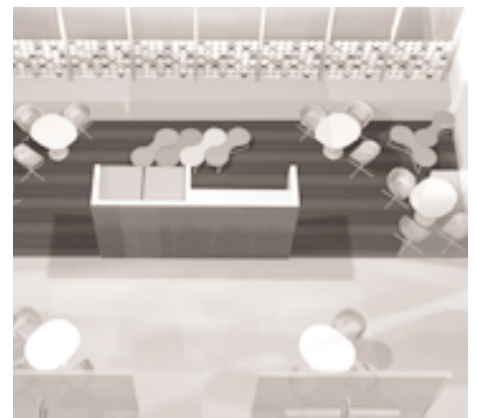
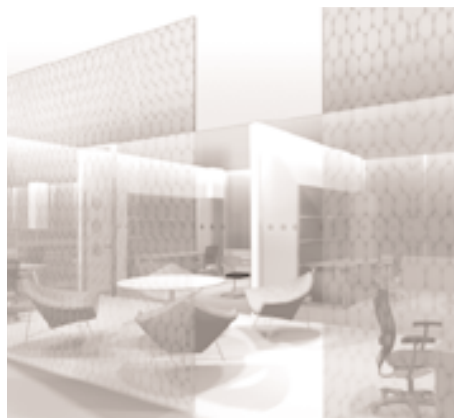
Implementing a new workplace model across Europe for Shell

Fiona Bradley, Real Estate Consultant, Shell

This presentation will describe how Shell developed a new Workplace Model for the European organisation, how it has been implemented and how this is now being developed further.

Post conference drinks reception, from 5:45pm

Courtesy of Tsunami Axis, a Herman Miller specialist



Speakers



Julian Seward was made a Principal of SHCA in 2000 and a board member in 2002. He is currently responsible for delivering integrated high quality architecture and interior design for capital and PFI hospital projects. Julian's career has included the design, as well as the management and direction, of projects in the USA, Europe and Far East including retail, healthcare, leisure and commercial offices.



Peter Thomson is Director of the Future Work Forum at Henley Management College which he founded in 1992. He has built this into a leading expertise centre in new working practices which provides information to a variety of organisations. He is also a director of WiseWork Ltd, a consultancy that specialises in flexible working and work-life balance. Prior to setting up the Forum, Peter was the Personnel Director for Digital in the UK and Northern Europe, during which time the company pioneered teleworking and other working patterns.



Ian Fielder joined BIFM as its CEO in May 2004, leaving Johnson Controls after almost 11 years where his last role was European Director of Strategic Marketing. His career in workplace management spans 31 years and covers both the private and public sectors. His involvement in the industry has included 13 years working in the NHS, eight years with IBM and then his stint with Procord/Johnson Controls. Ian is also chairman of the newly formed Asset Skills Council, representing the FM, Property, Housing and Cleaning Industries.



Paul Harrington is Real Estate Director at PwC, and provides overall leadership and direction for the firm's real estate principally in Europe, Middle East and Africa and also for all global real estate projects outside the US. Whilst leading his team through two mergers, one globalisation and the disposal of the firm's consultancy business to IBM, including a European collocation exercise of 14,000 projects and 50,000 people moves, Paul additionally initiated, developed and implemented a Real Estate Centre of Excellence to support PwC property initiatives worldwide.



Alexi Marmot established Alexi Marmot Associates in 1990 to help organisations to make best use of their buildings by applying evidence-based design. Alexi was educated as an architect and town planner in Sydney and California, before moving to London. She has taught at the Bartlett School of Architecture and Planning, University College London and was a director of Research and Development at DEGW.



Paul Finch Paul Finch is Editorial Director of the publishing group EMAP Construct. Paul was Editor of the Architects' Journal from 1994 to 1999 and continues to contribute to a wide range of forums as a commentator on architecture and design. He is a former member of the DETR's Advisory Group for the Greater London Authority Head quarters. In April 2004, after nearly five years as Chair of CABE's Design Review Committee, Paul moved to chair CABE's Regional Committee. He also acts as lead Commissioner on London issues.



Philip Ross is CEO of the Cordless Group and editor of UNWIRED. He is a consultant, commentator and researcher on technology and workplace futures and has pioneered research on the impact of new technologies on work, the work process and workplace. He has worked with organisations such as Ernst & Young, Allen & Overy, GlaxoSmithKline, Jones Lang LaSalle and Ericsson on future workplace concepts based on emerging cordless technologies.



Nigel Oseland is an Environmental Psychologist and Director of Consulting at SHCA. He has authored over 50 articles and publications on occupant satisfaction and productivity, including "Improving Office Productivity: A Guide for Business and Facilities Managers". Nigel now applies his research knowledge by advising clients how to redefine their workstyle and create space-efficient workplaces that enhance business productivity. Nigel manages to occasionally conduct empirical ("real world") research and present his views on workplace design.



Simon Roberts is currently a researcher in the Foresight, Innovation and Incubator Group of Arup. The Group is charged with maintaining a focus for logical, analytical thought about the many possible futures that Arup confronts. Simon is the Global Sustainability Skills Leader for the company with particular interests in renewable energy technologies, low-energy buildings and workplace performance issues. He formulated Arup's Integrated Workplace Performance (IWP) framework that encompasses both human and physical aspects.



Fiona Bradley, Fiona Bradley is a Real Estate Consultant at Royal Dutch Shell plc currently focusing on Workplace projects in Europe and Africa. Initially the projects focused on implementing a Conceptual Model, within the European Downstream business, but as a result of the differing requirements of the various businesses this is being developed into a Global Workplace Model. The new standards being introduced involve considerable cultural change management in the majority of the projects. Fiona spent 11 years with Royal Mail prior to joining Shell in 2001.

Technical coordinator:

Nigel Oseland, Swanke Hayden Connell Architects

Conference organiser:

Maggie Procopi, Merlin Events & Marketing

All images courtesy of Swanke Hayden Connell Architects © 2005



Booking Form

Workplace Trends: Implementing Change

Tuesday 8 November 2005, The British Museum, London WC1

You may find it easiest to send us a completed photocopy of this page.
All bookings will be acknowledged and final instructions will be sent prior to the conference.
Please note that acknowledgements and confirmations will be sent by email where your email address is supplied.

Conference fees:

£325 + VAT = £381.88 standard rate

Refreshments, a light lunch and evening drinks reception will be provided.

You may book on-line at www.workplacetrends.co.uk or complete and return the form below.

First name _____ Surname _____

Position _____ Organisation _____

Address _____

_____ Postcode _____

Tel _____ Fax _____ Email _____

Payment Methods

I enclose a cheque for the amount of £ _____ made payable to 'Merlin Events & Marketing'.

Please debit card number below the amount of £ _____

Card number

Valid from date / Expiry date / Issue number (Switch)

Please send a proforma invoice for the amount of £ _____ + VAT.

VAT invoices will be sent in response to payments sent with booking forms.

Please note that payments should be received by the date of the conference.

Cancellations

Cancellations received in writing by four weeks before the date of the conference will be subject to a 25% administration fee.
After this time no refunds will be made, however places are transferable and colleagues are welcomed in replacement.

All conference times shown are approximate and may be subject to change. We reserve the right to make reasonable changes to the speakers or the programme and to cancel the conference without further liability, at which time fees will be refunded in full.

Send this form by post, fax or email to:

Merlin Events & Marketing
PO Box 953, Berkhamsted, Herts. HP4 1ZN
Tel: 01442 866378 Fax: 01442 863464
Email: mail@merlin-events.co.uk www.workplacetrends.co.uk